

The journey to a drivers licence

HOW PEOPLE EXPERIENCE THE SYSTEM

The journey to gain a licence through our current Graduated Driver Licensing System (GDLS) is not the same for everyone.

The current system has been in place since 1987, and while it works for most New Zealanders, for some, barriers such as: cost, language, literacy, access to a legal vehicle or a licensed adult to teach them prevent them from progressing through the system and gaining a full licence.

Put yourself in the shoes of someone whose parents never got their licences, someone new to New Zealand whose first language is not English, a teenager with dyslexia or a solo parent living rurally, who has no family or friends living nearby. These are just some examples of people who, without support, face substantial hurdles in our current system.

This diagram maps the journey to gain a driver licence, and how difficult the experience can be for different users.

*Please note:

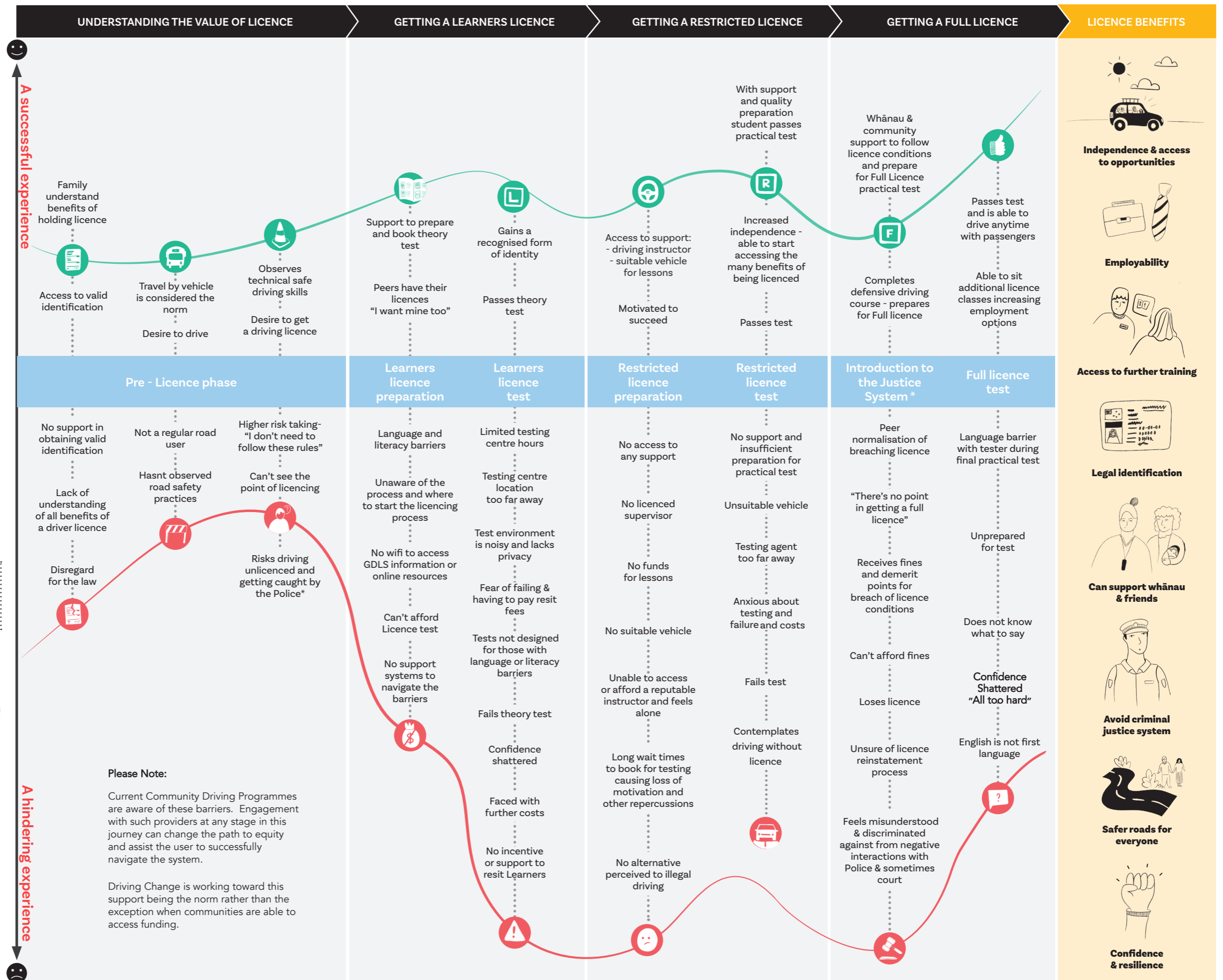
Introduction to the Justice System may occur at anytime along the journey

THE DRIVING CHANGE NETWORK

The Driving Change Network consists of a diverse range of stakeholders that are committed to creating an equitable driver licensing system in Aotearoa.

We recognise the significant barriers present in the current system and exist to provide national voice and leadership to enable positive change.

To find out more about us and the mahi we do, check out our website [here](#).



Please Note:

Current Community Driving Programmes are aware of these barriers. Engagement with such providers at any stage in this journey can change the path to equity and assist the user to successfully navigate the system.

Driving Change is working toward this support being the norm rather than the exception when communities are able to access funding.