



Quarterly Network News, Updates & Information

Quick Updates

Like our page for updates
[Facebook](#)

Know someone keen to join?
 New members can
[sign up here](#)

2021 NETWORK CONNECT

COVID means our regional hui can't happen - please join us online instead

[Thursday 25th November 1.00pm](#)

or

[Monday 6th December 2.30pm](#)

Join Our Workgroups

- Employability**
- 9am 2nd Friday, Bimonthly
- Government Advocacy & Comms.**
- 9.30am 3rd Thursday, Monthly
- Education in Schools**
- 1.30pm 3rd Wednesday, Monthly
- For Māori by Māori**
- 9am 1st Thursday, Monthly
- Disability**
- 10.30am 1st Tuesday, Monthly
- Best Practise programmes & Training**
- 8.30am 2nd Wednesday, Monthly
- Multicultural**
- 8.30am 4th Friday, Monthly

National Coordinator

Wendy Robertson
 p. 027 562-8972
 e. wendy@drivingchange.nz



Steering Group Update

It is hard to believe that it has been four months since we gathered in Wellington for our National Hui. So much is happening! Wendy has been incredibly busy and hasn't had a chance to let our members know what's been going on for a while, so aroha mai, this e-news is a big one. If you want to be more involved in the Network and keep on top of it all we highly recommend joining a workgroup. We wanted to say a huge thank you to Wendy for all the work she's been doing.

Some highlights we wanted to showcase are:

1. The submission to the workgroup - details p2
2. The submission on the policy change ([submission here](#)).
3. Wendy has been working incredibly hard on comms please visit our [Facebook page](#) and check it out.

A few changes we need to update everyone on:

1. Our fabulous Chair Emily Reeves has had to step down from the role ([read her story here](#)).
2. Deputy Chair Dallas Seymour and Tania Pointon have stepped up to be Co-Chairs
3. Our fund-holder, Hamilton Multicultural Services Trust, has changed to Momentum Waikato
4. We have lean funding secured from our national funders until 2023

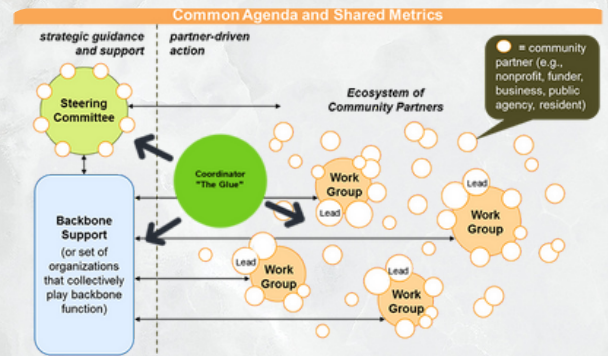
Exciting things in the wings:

1. The campaign about trying to get licences in schools
2. Meeting with Minister of Transport
3. Chances for us to connect as a network digitally ([Thursday](#) or [Monday](#))

Constellations or Workgroups?

You may have heard the term 'constellations' thrown around by the Steering Group and we wanted to make it a bit clearer what we mean by this.

The way the Driving Change Network has been set up is in the spirit of something called a 'Constellation Governance Model'. Essentially what this means is that we have a lightweight governance group (the Steering Group), a 'backbone body' which is where the money, administration and employment functions sit (now with Momentum Waikato), someone who glues all the pieces together (Wendy our National Coordinator), and 'constellations' (working groups).



The working groups essentially govern themselves and get on with the actions and mahi. This is where you awesome members of the Network get to be involved. These groups don't need to keep checking in with the Steering Group all the time because the leader of each group is part of the Steering Group. When the Steering Group meets all the work from the different working groups is reported back and joined up, if it hasn't already been connected up by Wendy in her glue role.

So whether you call it a constellation, a working group or an action group doesn't really matter at the end of the day. What matters is that if you, as a member of the Network, want to get involved and active, then join one of these groups and let's make change together.

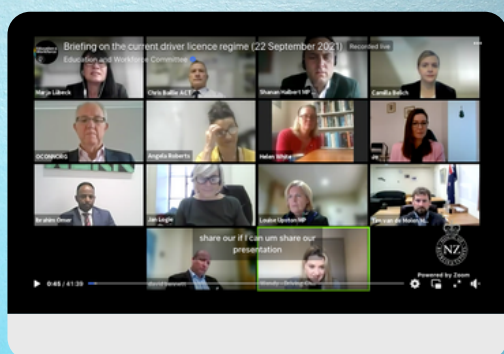
A list of our working groups can be found on page one of this newsletter along with links to the zoom meetings. Please feel free to join us.

Education & Workforce Select Committee

We recently had the privilege of presenting to not only the Education & Workforce Select Committee, but thanks to COVID also to members of the Transport Select Committee.

During our presentation we highlighted why Driver Education, training and licensing should be made available in all schools and the benefits of doing so.

You can watch this presentation [here](#)



Submission on Learners & Restricted Licence Expiry Period

Although as a collective the members of the Driving Change Committee work to remove the barriers to licensing and wish to make it easier for road users to gain a licence so they can drive legally, we also believe that it is important for road users to progress through the GDLS to Full licence to ensure we have safe drivers on our roads.

For this reason we opposed reverting back to a ten year expiry for Learners & Restricted licences and appealed to government to let their current reviews into access and equity run their course first.

We want to see systemic changes made to reduce the barriers some people face prior to any changes to the legislation.

As we all know, continual bandaids will not fix the bigger issues within the current system.

[Read our submission here](#)

New Website

Our new website is now live. Users should be able to find copies of all our main pieces of work to date, information about the network and the application to get involved.

There is also a members only section, please contact Wendy for the password for this.

In this section you will find downloadable versions of our purpose document, media instruction pack, our logos and all of the graphics used on our website and in our printed material. As members you are welcome to use this material providing you are keeping to the agreed messaging and you are using it for the promotion of the Network and our messages.



Farewell to HMS Trust

After 12 years at Hamilton Multicultural Services and being the driving force behind both the Passport 2 Drive programme and the Open Road programme, Tania Pointon has left HMS to take up an exciting new position as CEO at Seed Waikato.

Tania has been one of the founding members of the Driving Change Network, and without her and HMS Trust stepping up and taking on the role of the backbone organisation we would not be where we are today. With Tania leaving HMS Trust we thought it was timely to find a new fund-holder.

We thank Tania and the board and management at HMS Trust for everything they have done for the Driving Change Network over the past two years.

The good news is we have found a new Backbone organisation and as of 1st November 2021, the Driving Change Network will come under the umbrella of Momentum Waikato and the CEO, Kelvyn Eglinton will join the Steering Group.

Even more exciting is that Tania Pointon will join Dallas Seymour as Co-Chair of our network as Emily Reeves steps down.



GDLS Review



The research and fact finding phase has been completed by the MSD and MoT teams working on the GDLS legislative and access to licensing reviews. We have been told that preliminary reports have been presented to cabinet. During this phase they are unable to share the details or give any specifics regarding proposed changes.

We have been assured that the concerns of the Driving Change Network have been heard and that many of these have been addressed in their

recommendations for future improvements to the system. We have also been assured that Members of the Driving Change Network will be invited to make submissions on possible changes in the new year.

We are continuing to work with the government agency staff in the driver licensing space to look at improvements that can be made without the need for legislative changes. No big updates at the moment, however indications are very exciting - **WATCH THIS SPACE**

Regional Zui

Normally at this time we should be getting out and about to meet all those amazing people working in the Driver Education, Training and Licensing space. Unfortunately due to a number of factors, including COVID, the decision has been made to take these networking meetings online this year.

There will be two online meetings - one on [Thursday 25th November](#) and a second on [Monday 6th December](#). Registration will be necessary for these meetings and can be done at the links on the first page of this newsletter.

These will be interactive meetings, and an opportunity for you to have your say on matters in breakout rooms. There will also be opportunities to hear updates from Waka Kotahi, Ministry of Transport and MSD staff involved in the current GDLS review work. More information and an agenda will be sent out to those who register. Registrations can be done using the green links in this article or on the front page.

VTNZ Practical Testing

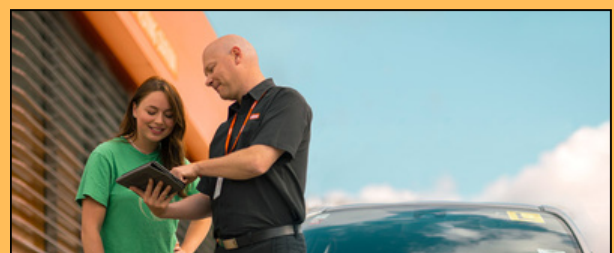
As you are all aware over the past 18 months the length of time a student is having to wait to secure a test spot for the practical tests has been getting longer and longer. The issue was made worse with lockdowns and the announcement of 5 year licence expiry periods.

At its worst, some areas were facing delays of more than 100 days.

We are pleased to advise that together VTNZ and Waka Kotahi have invested considerable effort and resource into recruiting and training additional testing officers to help meet the current testing demands. They have taken the number of testers nationwide from 110, to 154 nationwide (as of September).

Just prior to the start of the August lockdown, many of you will have noticed a positive difference with just half dozen locations in the Far North, Waikato, Nelson, Dunedin and Gore experiencing delays. Unfortunately with the Auckland region having now been in lockdown for close to 3 months, it is inevitable that when they finally reach level 2 they will revert back to a huge backlog and long delays to access testing.

There will be a flow on effect to surrounding regions while this is cleared with students travelling to other areas in an effort to reduce the wait time for a practical test.



Member Profile

MAYORS TASKFORCE FOR JOBS Chatham Islands Council project

The Mayors Taskforce for Jobs in partnership with the Ministry of Social Development, have been working with rural councils and their mayors, to link young people with sustainable employment.

The partnership has achieved more than 1,300 rural employment outcomes to date. A lack of access to driver licensing and testing remains a common barrier for our youth when entering the labour market.

The Chatham Islands Council is unique, as you cannot sit your licence inland, due to the Waka Kotahi baseline testing requirements. Mayor Monique Croon identified that most Chatham Island locals are not fully licenced, the cost is significant for locals if they do wish to get their driver licence, a nearly \$1200 return airfare is needed on top of accommodation, licence fees and the pressure of failing.

"We linked up CIC with Kiwi Can Do, who are funded by MSD's Industry Partnership and play a large role supporting unemployed New Zealanders into employment, particularly in the construction sector. The intention was to cover the cost of return airfares and licence fees, so locals could undertake training in mainland New Zealand with Kiwi Can Do, to ensure they were well placed to sit their test."

The first pilot trip to Wellington was a little bit disconcerting when day one, 10 of the 14 drivers failed their test. More time was needed for the Chatham Islanders to familiarise themselves with 'city driving', including roundabouts, traffic lights and busy intersections. "Luckily, we had booked a resit day on the Thursday and 10 were eventually successful out of the 14!"

We have now purchased 30 return airfares for Chatham Island locals, with the intention to get them all licenced and ultimately, more employable, either on the Island or on mainland New Zealand!



Each quarter we will profile one of our members and the amazing programme they run for their community. If you would like to share your story, please email it to wendy@drivingchange.nz